

# SSO Login and Account Linking

Heartland Payment Systems

2017-09-25 rev 0.2

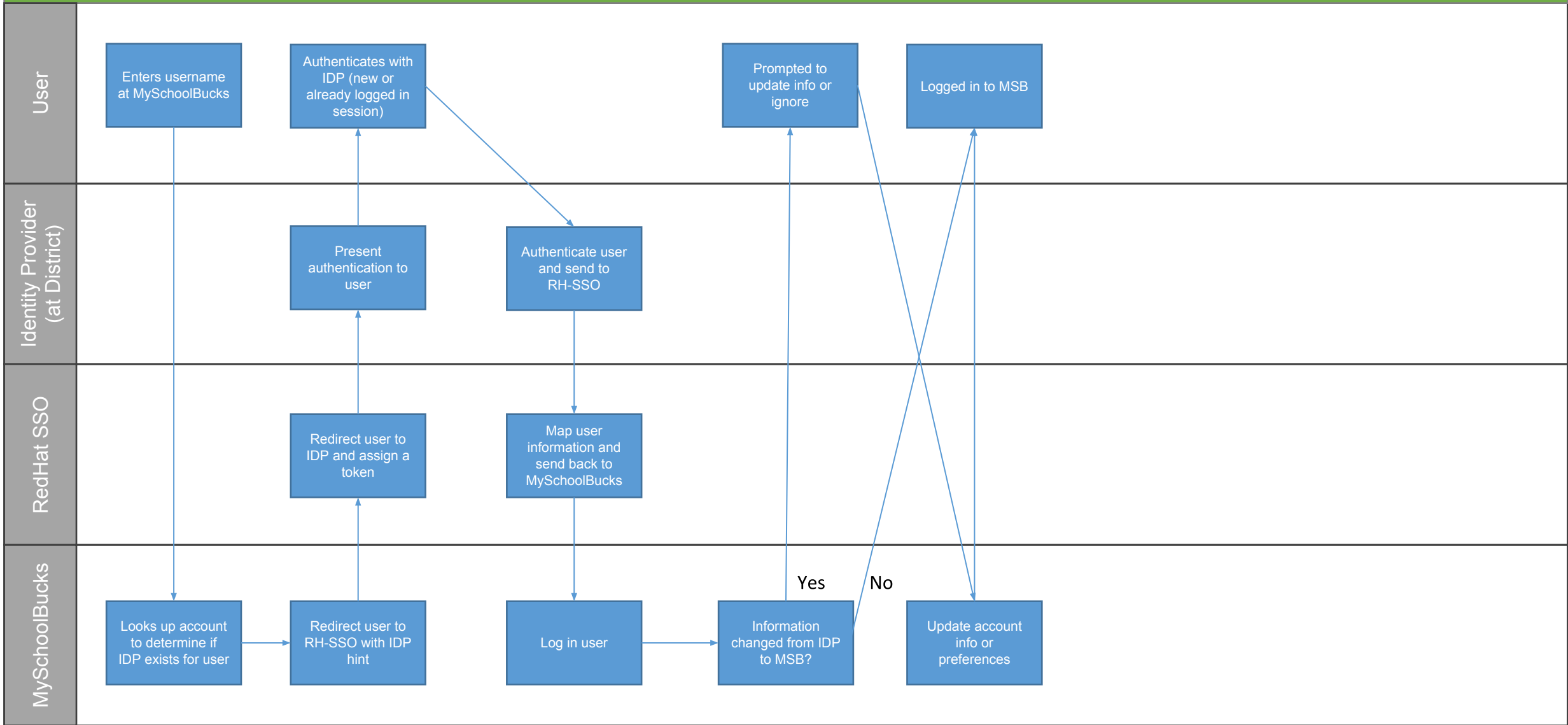
---

## Document Change Log

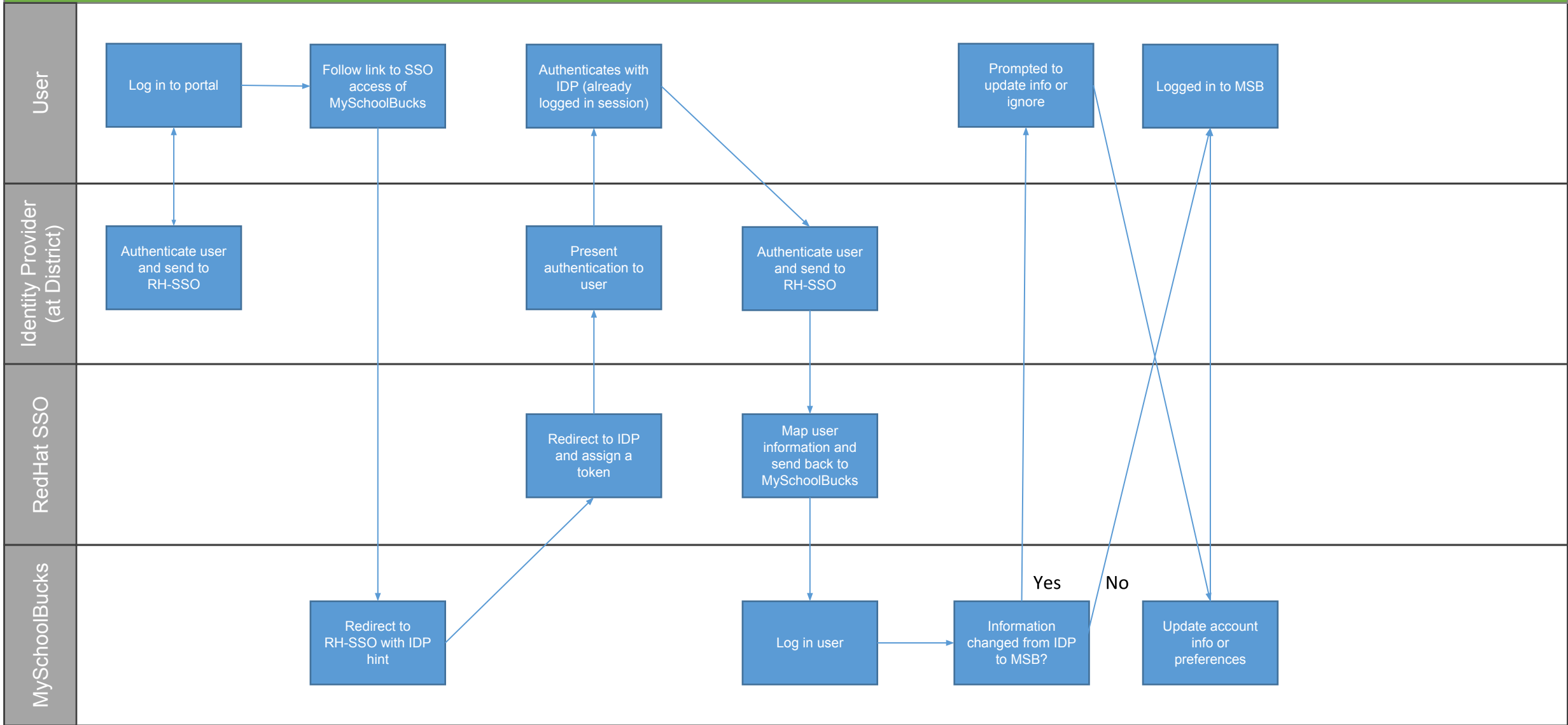
0.1 – Initial version

0.2 – Formatting changes for Google Sheets

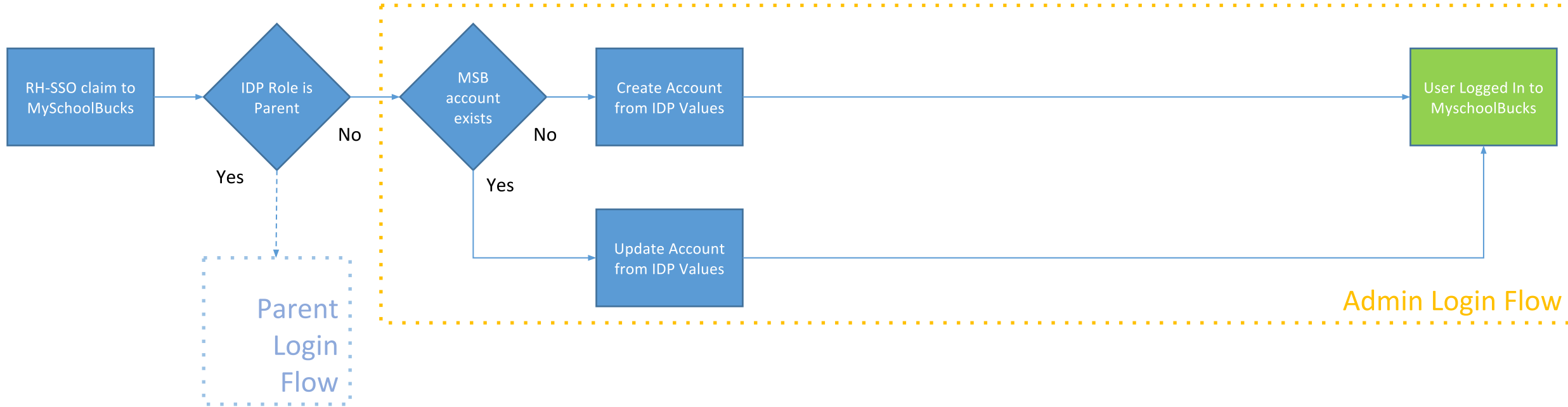
# Roles for Login: MySchoolBucks initiated login



# Roles for Login: Portal/external initiated login



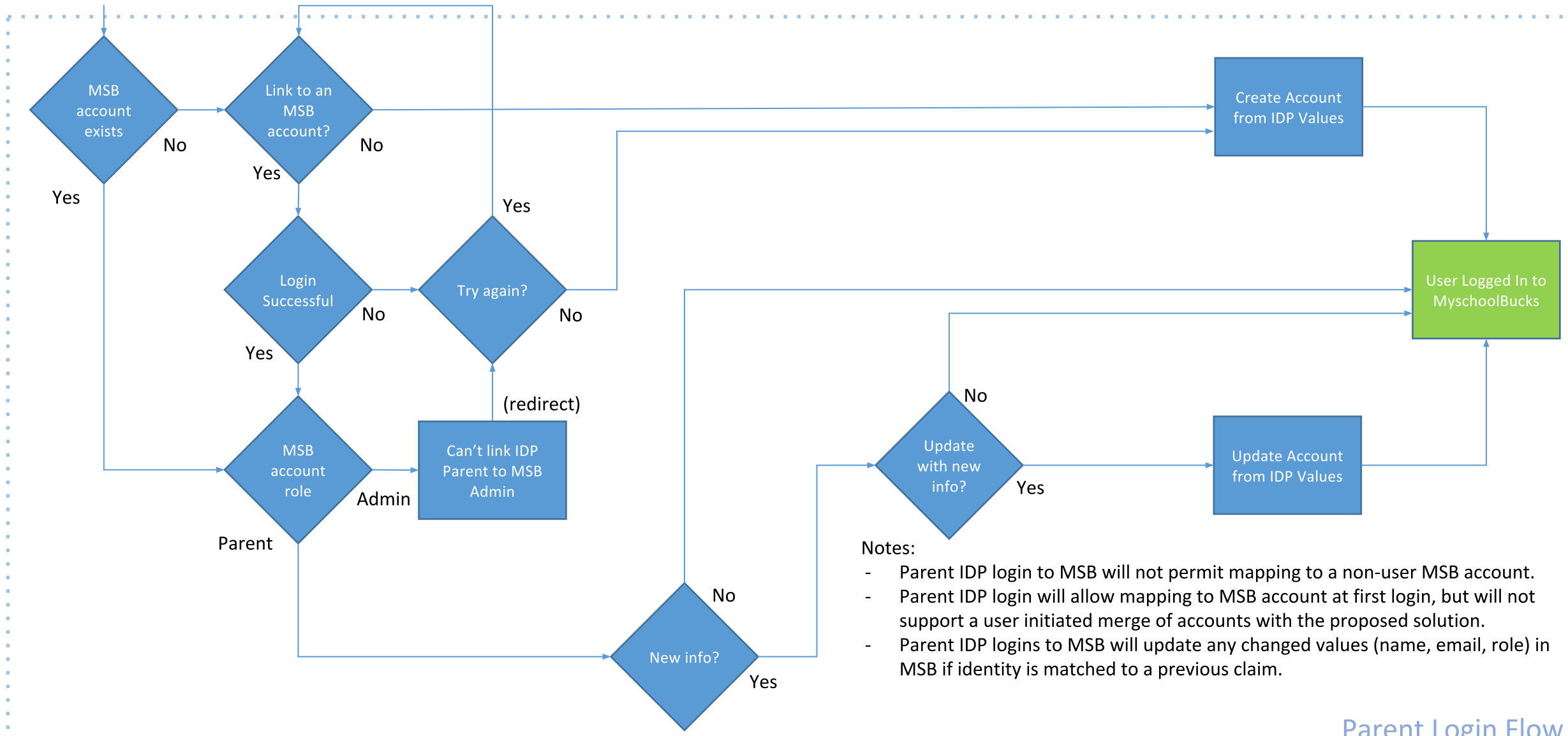
## Process Flow: Login RH-SSO to MSB



### Notes:

- Administration logins to MSB will not be mapping to any existing identities in MSB via a claim process.
- Administration logins to MSB will create a new identity in MSB if one is new or not matched to a previous claim.
- Administration logins to MSB will update any changed values (name, email, role) in MSB if identity is matched to a previous claim.

## Process Flow: Parent login flow (inset from previous)



**Notes:**

- Parent IDP login to MSB will not permit mapping to a non-user MSB account.
- Parent IDP login will allow mapping to MSB account at first login, but will not support a user initiated merge of accounts with the proposed solution.
- Parent IDP logins to MSB will update any changed values (name, email, role) in MSB if identity is matched to a previous claim.